

Verification Report

No. CANEC1520859101

Date: 15 Dec 2015

Page 1 of 17

Sample Name : Electronic Personal Scale

SGS Job No. : CP15-068019 - GZ

Internal Reference No. : 3.1

Tested Basic Model No. EF934
(P.O. No.) :

Tested Extended Model No. EB9068
(P.O. No.) :

Date of Sample Received : 02 Dec 2015

Verification Period : 02 Dec 2015 - 15 Dec 2015

Verification Requested : With reference to RoHS Directive 2011/65/EU recasting 2002/95/EC.

Verification Method : Please refer to next page(s).

Verification Result : Please refer to next page(s).

Verification Conclusion : Based on the verification results of the submitted samples, the results of Lead, Mercury, Cadmium, Hexavalent chromium, Polybrominated biphenyls (PBBs), Polybrominated diphenyl ethers (PBDEs) comply with the limits as set by RoHS Directive 2011/65/EU Annex II; recasting 2002/95/EC.
According to the declaration from client, the materials of other parts in product "Electronic Personal Scale" (Model EB9068) are the same as those in product "Boby Fat/Hydration Monitor Scale" (Model EF934) on report CANEC1512212901 (data and photos are shown on report CANEC1512212901)

Note : The test results are related only to the tested items. The report shall not be reproduced except in full without the written approval of the testing laboratory.

Signed for and on behalf of
SGS-CSTC Standards Technical Services Co., Ltd. Guangzhou Branch

Jenny

Jenny Liao
Approved Signatory



This document is issued by the Company subject to its General Conditions of Service printed overleaf, available on request or accessible at <http://www.sgs.com/en/Terms-and-Conditions.aspx> and, for electronic format documents, subject to Terms and Conditions for Electronic Documents at <http://www.sgs.com/en/Terms-and-Conditions/Terms-e-Documents.aspx>. Attention is drawn to the limitation of liability, indemnification and jurisdiction issues defined therein. Any holder of this document is advised that information contained hereon reflects the Company's findings at the time of its intervention only and within the limits of Client's instructions, if any. The Company's sole responsibility is to its Client and this document does not exonerate parties to a transaction from exercising all their rights and obligations under the transaction documents. This document cannot be reproduced except in full, without prior written approval of the Company. Any unauthorized alteration, forgery or falsification of the content or appearance of this document is unlawful and offenders may be prosecuted to the fullest extent of the law. Unless otherwise stated the results shown in this test report refer only to the sample(s) tested.

Attention: To check the authenticity of testing /inspection report & certificate, please contact us at telephone: (86-755) 8307 1443, or email: CN.Doccheck@sgs.com

198 Kezhu Road, Sciencetech Park Guangzhou Economic & Technology Development District, Guangzhou, China 510663 t (86-20) 82155555 f (86-20) 82075113 www.sgsgroup.com.cn
中国·广州·经济技术开发区科学城科珠路198号 邮编: 510663 t (86-20) 82155555 f (86-20) 82075113 e sgs.china@sgs.com

Verification Report

No. CANEC1520859101

Date: 15 Dec 2015

Page 2 of 17

Verification Method :

1. With reference to IEC 62321-2:2013, review was performed for the samples disjointed from the submitted articles.
2. With reference to IEC 62321-1:2013, tests were performed for the samples indicated by the photos in the report.
 - (1) With reference to IEC 62321-3-1: 2013, screening by EDXRF Spectroscopy
 - (2) Wet Chemical Test Method:
 - a. With reference to IEC 62321-5:2013, determination of Cadmium by ICP-OES.
 - b. With reference to IEC 62321-5:2013, determination of Lead by ICP-OES.
 - c. With reference to IEC 62321-4:2013, determination of Mercury by ICP-OES.
 - d. With reference to IEC 62321:2008, determination of Hexavalent Chromium by spot test / Colorimetric Method using UV-Vis.
 - e. With reference to IEC 62321-6:2015, determination of PBBs and PBDEs by GC-MS.



This document is issued by the Company subject to its General Conditions of Service printed overleaf, available on request or accessible at <http://www.sgs.com/en/Terms-and-Conditions.aspx> and, for electronic format documents, subject to Terms and Conditions for Electronic Documents at <http://www.sgs.com/en/Terms-and-Conditions/Terms-e-Documents.aspx>. Attention is drawn to the limitation of liability, indemnification and jurisdiction issues defined therein. Any holder of this document is advised that information contained hereon reflects the Company's findings at the time of its intervention only and within the limits of Client's instructions, if any. The Company's sole responsibility is to its Client and this document does not exonerate parties to a transaction from exercising all their rights and obligations under the transaction documents. This document cannot be reproduced except in full, without prior written approval of the Company. Any unauthorized alteration, forgery or falsification of the content or appearance of this document is unlawful and offenders may be prosecuted to the fullest extent of the law. Unless otherwise stated the results shown in this test report refer only to the sample(s) tested.

Attention: To check the authenticity of testing / inspection report & certificate, please contact us at telephone: (86-755) 8307 1443, or email: CN.Doccheck@sgs.com

198 Kezhu Road, Sciencetech Park Guangzhou Economic & Technology Development District, Guangzhou, China 510663 t (86-20) 82155555 f (86-20) 82075113 www.sgsgroup.com.cn
中国·广州·经济技术开发区科学城科珠路198号 邮编: 510663 t (86-20) 82155555 f (86-20) 82075113 e sgs.china@sgs.com

Part No.	Part Description	BOM No.	Restricted Substances	Results of EDXRF (1)	Result of Wet Chemical Testing(2) (mg/kg)	Conclusion on EU RoHS	Sample Submitted / Resubmitted Date
1	Transparent glass sheet w/ silvery surface	-	Pb Cd Hg Cr(VI) PBBs PBDEs	BL BL BL BL BL BL	--- --- --- --- --- ---	Comply Comply Comply Comply Comply Comply	02 Dec 2015
2	Transparent adhesive plastic sheet w/ black printing (label) (on No.1)	-	Pb Cd Hg Cr(VI) PBBs PBDEs	BL BL BL BL BL BL	--- --- --- --- --- ---	Comply Comply Comply Comply Comply Comply	02 Dec 2015
3	Grey plastic part (on No.1)	-	Pb Cd Hg Cr(VI) PBBs PBDEs	BL BL BL BL BL BL	--- --- --- --- --- ---	Comply Comply Comply Comply Comply Comply	02 Dec 2015
4	Grey plastic shell (on No.1)	-	Pb Cd Hg Cr(VI) PBBs PBDEs	BL BL BL BL BL BL	--- --- --- --- --- ---	Comply Comply Comply Comply Comply Comply	02 Dec 2015

Verification Report

No. CANEC1520859101

Date: 15 Dec 2015

Page 4 of 17

Part No.	Part Description	BOM No.	Restricted Substances	Results of EDXRF (1)	Result of Wet Chemical Testing(2) (mg/kg)	Conclusion on EU RoHS	Sample Submitted / Resubmitted Date
5	Silvery adhesive plastic sheet w/ black printing (label) (on No.4)	-	Pb Cd Hg Cr(VI) PBBs PBDEs	BL BL BL BL BL BL	--- --- --- --- --- ---	Comply Comply Comply Comply Comply Comply	02 Dec 2015
6	Silvery metal tube (on No.1)	-	Pb Cd Hg Cr(VI) PBBs PBDEs	BL BL BL IN --- ---	--- --- --- Negative --- ---	Comply Comply Comply Comply --- ---	02 Dec 2015
7	White adhesive sponge sheet (on No.1)	-	Pb Cd Hg Cr(VI) PBBs PBDEs	BL BL BL BL BL BL	--- --- --- --- --- ---	Comply Comply Comply Comply Comply Comply	02 Dec 2015
8	White plastic part (connected w/ No.3)	-	Pb Cd Hg Cr(VI) PBBs PBDEs	BL BL BL BL BL BL	--- --- --- --- --- ---	Comply Comply Comply Comply Comply Comply	02 Dec 2015



This document is issued by the Company subject to its General Conditions of Service printed overleaf, available on request or accessible at <http://www.sgs.com/en/Terms-and-Conditions.aspx> and, for electronic format documents, subject to Terms and Conditions for Electronic Documents at <http://www.sgs.com/en/Terms-and-Conditions/Terms-e-Document.aspx>. Attention is drawn to the limitation of liability, indemnification and jurisdiction issues defined therein. Any holder of this document is advised that information contained hereon reflects the Company's findings at the time of its intervention only and within the limits of Client's instructions, if any. The Company's sole responsibility is to its Client and this document does not exonerate parties to a transaction from exercising all their rights and obligations under the transaction documents. This document cannot be reproduced except in full, without prior written approval of the Company. Any unauthorized alteration, forgery or falsification of the content or appearance of this document is unlawful and offenders may be prosecuted to the fullest extent of the law. Unless otherwise stated the results shown in this test report refer only to the sample(s) tested.

Attention: To check the authenticity of testing / inspection report & certificate, please contact us at telephone: (86-755) 8307 1443, or email: CN.Doccheck@sgs.com

SGS-CTC Standards Technical Services Co., Ltd.
Guangzhou Branch

198 Kezhu Road, Sciencetech Park Guangzhou Economic & Technology Development District, Guangzhou, China 510663 t (86-20) 82155555 f (86-20) 82075113 www.sgsgroup.com.cn
中国·广州·经济技术开发区科学城科珠路198号 邮编: 510663 t (86-20) 82155555 f (86-20) 82075113 e sgs.china@sgs.com

Verification Report

No. CANEC1520859101

Date: 15 Dec 2015

Page 5 of 17

Part No.	Part Description	BOM No.	Restricted Substances	Results of EDXRF (1)	Result of Wet Chemical Testing(2) (mg/kg)	Conclusion on EU RoHS	Sample Submitted / Resubmitted Date
9	Silvery metal sheet (in No.8)	-	Pb Cd Hg Cr(VI) PBBs PBDEs	BL BL BL IN --- ---	--- --- --- Negative --- ---	Comply Comply Comply Comply --- ---	02 Dec 2015
10	Silvery metal sheet (on No.9)	-	Pb Cd Hg Cr(VI) PBBs PBDEs	BL BL BL IN --- ---	--- --- --- Negative --- ---	Comply Comply Comply Comply --- ---	02 Dec 2015
11	Silvery metal rivet (on No.10)	-	Pb Cd Hg Cr(VI) PBBs PBDEs	BL BL BL BL --- ---	--- --- --- --- --- ---	Comply Comply Comply Comply --- ---	02 Dec 2015
12	Grey plastic part (on No.3)	-	Pb Cd Hg Cr(VI) PBBs PBDEs	BL BL BL BL BL BL	--- --- --- --- --- ---	Comply Comply Comply Comply Comply Comply	02 Dec 2015

Verification Report

No. CANEC1520859101

Date: 15 Dec 2015

Page 6 of 17

Part No.	Part Description	BOM No.	Restricted Substances	Results of EDXRF (1)	Result of Wet Chemical Testing(2) (mg/kg)	Conclusion on EU RoHS	Sample Submitted / Resubmitted Date
13	Silvery metal sheet (in No.12)	-	Pb Cd Hg Cr(VI) PBBs PBDEs	BL BL BL IN --- ---	--- --- --- Negative --- ---	Comply Comply Comply Comply --- ---	02 Dec 2015
14	Grey adhesive rubber sheet (on No.12)	-	Pb Cd Hg Cr(VI) PBBs PBDEs	BL BL BL BL BL BL	--- --- --- --- --- ---	Comply Comply Comply Comply Comply Comply	02 Dec 2015
15	Grey plastic cover (on No.4)	-	Pb Cd Hg Cr(VI) PBBs PBDEs	BL BL BL BL BL BL	--- --- --- --- --- ---	Comply Comply Comply Comply Comply Comply	02 Dec 2015
16	White plastic shell w/ black printing (connected w/ No.4)	-	Pb Cd Hg Cr(VI) PBBs PBDEs	BL BL BL BL BL BL	--- --- --- --- --- ---	Comply Comply Comply Comply Comply Comply	02 Dec 2015

Verification Report

No. CANEC1520859101

Date: 15 Dec 2015

Page 7 of 17

Part No.	Part Description	BOM No.	Restricted Substances	Results of EDXRF (1)	Result of Wet Chemical Testing(2) (mg/kg)	Conclusion on EU RoHS	Sample Submitted / Resubmitted Date
17	Silvery metal sheet (in No.4)	-	Pb Cd Hg Cr(VI) PBBs PBDEs	BL BL BL BL --- ---	--- --- --- --- --- ---	Comply Comply Comply Comply --- ---	02 Dec 2015
18	Silvery metal solder (on No.17)	-	Pb Cd Hg Cr(VI) PBBs PBDEs	BL BL BL BL --- ---	--- --- --- --- --- ---	Comply Comply Comply Comply --- ---	02 Dec 2015
19	Black rubber sheet (in No.16)	-	Pb Cd Hg Cr(VI) PBBs PBDEs	BL BL BL BL BL BL	--- --- --- --- --- ---	Comply Comply Comply Comply Comply Comply	02 Dec 2015
20	Black adhesive sponge sheet (in No.16)	-	Pb Cd Hg Cr(VI) PBBs PBDEs	BL BL BL BL BL BL	--- --- --- --- --- ---	Comply Comply Comply Comply Comply Comply	02 Dec 2015

Part No.	Part Description	BOM No.	Restricted Substances	Results of EDXRF (1)	Result of Wet Chemical Testing(2) (mg/kg)	Conclusion on EU RoHS	Sample Submitted / Resubmitted Date
21	Green "PCB" (in No.16)	-	Pb Cd Hg Cr(VI) PBBs PBDEs	BL BL BL BL IN IN	--- --- --- --- ND ND	Comply Comply Comply Comply Comply Comply	02 Dec 2015
22	Green "PCB" (connected w/ No.21)	-	Pb Cd Hg Cr(VI) PBBs PBDEs	BL BL BL BL IN IN	--- --- --- --- ND ND	Comply Comply Comply Comply Comply Comply	02 Dec 2015
23	Silvery metal screw (on No.21)	-	Pb Cd Hg Cr(VI) PBBs PBDEs	BL BL BL IN --- ---	--- --- --- Negative --- ---	Comply Comply Comply Comply --- ---	02 Dec 2015
24	Silvery metal shell (on No.21)	-	Pb Cd Hg Cr(VI) PBBs PBDEs	BL BL BL BL --- ---	--- --- --- --- --- ---	Comply Comply Comply Comply --- ---	02 Dec 2015

Part No.	Part Description	BOM No.	Restricted Substances	Results of EDXRF (1)	Result of Wet Chemical Testing(2) (mg/kg)	Conclusion on EU RoHS	Sample Submitted / Resubmitted Date
25	Silvery metal solder (on No.21)	-	Pb Cd Hg Cr(VI) PBBs PBDEs	BL BL BL BL --- ---	--- --- --- --- --- ---	Comply Comply Comply Comply --- ---	02 Dec 2015
26	Black plastic shell (in No.24)	-	Pb Cd Hg Cr(VI) PBBs PBDEs	BL BL BL BL BL BL	--- --- --- --- --- ---	Comply Comply Comply Comply Comply Comply	02 Dec 2015
27	Silvery metal pin (in No.26)	-	Pb Cd Hg Cr(VI) PBBs PBDEs	BL BL BL BL --- ---	--- --- --- --- --- ---	Comply Comply Comply Comply --- ---	02 Dec 2015
28	Black plastic button (on No.24)	-	Pb Cd Hg Cr(VI) PBBs PBDEs	BL BL BL BL BL BL	--- --- --- --- --- ---	Comply Comply Comply Comply Comply Comply	02 Dec 2015

Part No.	Part Description	BOM No.	Restricted Substances	Results of EDXRF (1)	Result of Wet Chemical Testing(2) (mg/kg)	Conclusion on EU RoHS	Sample Submitted / Resubmitted Date
29	Silvery metal sheet (in No.26)	-	Pb Cd Hg Cr(VI) PBBs PBDEs	BL BL BL IN --- ---	--- --- --- Negative --- ---	Comply Comply Comply Comply --- ---	02 Dec 2015
30	Black block (on No.21)	-	Pb Cd Hg Cr(VI) PBBs PBDEs	BL BL BL BL IN IN	--- --- --- --- ND ND	Comply Comply Comply Comply Comply Comply	02 Dec 2015

Verification Report

No. CANEC1520859101

Date: 15 Dec 2015

Page 11 of 17

Remark :

(1) (a) There are the results on total Br while test items on restricted substances are PBBs and PBDEs. There is the result on total Cr while test item on restricted substances is Cr(VI).

(b) Results are obtained by EDXRF for primary screening, and further chemical testing by ICP-OES (for Cd, Pb, Hg), UV-Vis (for Cr(VI)) and GC-MS (for PBBs, PBDEs) is recommended to be performed, if the concentration exceeds the below warning value according to IEC62321-3-1:2013 (unit: mg/kg).

Element	Polymer	Metal	Composite Materials
Cd	$BL \leq (70-3\sigma) < X < (130+3\sigma) \leq OL$	$BL \leq (70-3\sigma) < X < (130+3\sigma) \leq OL$	$LOD < X < (150+3\sigma) \leq OL$
Pb	$BL \leq (700-3\sigma) < X < (1300+3\sigma) \leq OL$	$BL \leq (700-3\sigma) < X < (1300+3\sigma) \leq OL$	$BL \leq (500-3\sigma) < X < (1500+3\sigma) \leq OL$
Hg	$BL \leq (700-3\sigma) < X < (1300+3\sigma) \leq OL$	$BL \leq (700-3\sigma) < X < (1300+3\sigma) \leq OL$	$BL \leq (500-3\sigma) < X < (1500+3\sigma) \leq OL$
Br	$BL \leq (300-3\sigma) < X$	--	$BL \leq (250-3\sigma) < X$
Cr	$BL \leq (700-3\sigma) < X$	$BL \leq (700-3\sigma) < X$	$BL \leq (500-3\sigma) < X$

(c) BL = Below Limit, OL = Over Limit, IN = Inconclusive, LOD = Limit of Detection, -- = Not regulated.

(d) The XRF screening test for RoHS elements - The reading may be different to the actual content in the sample be of non-uniformity composition.

(2) (a) mg/kg = 0.0001%, MDL = Method detection Limit, ND = Not Detected (<MDL), --- = Not conducted, - = Without BOM.

(b) Unit and MDL in wet chemical test

Test Item	Pb	Cd	Hg
Unit	mg/kg	mg/kg	mg/kg
MDL	10	10	10

The MDL for single compound of PBBs and PBDEs is 100 mg/kg, MDL of Cr(VI) for polymer and composite sample is 10 mg/kg.

(c) According to IEC 62321:2008, result on Cr(VI) for metal sample is shown as Positive/Negative.
Negative = Absence of Cr(VI) coating, Positive = Presence of Cr(VI) coating.

Verification Report

No. CANEC1520859101

Date: 15 Dec 2015

Page 12 of 17

Sample photo:

CANEC1520859101

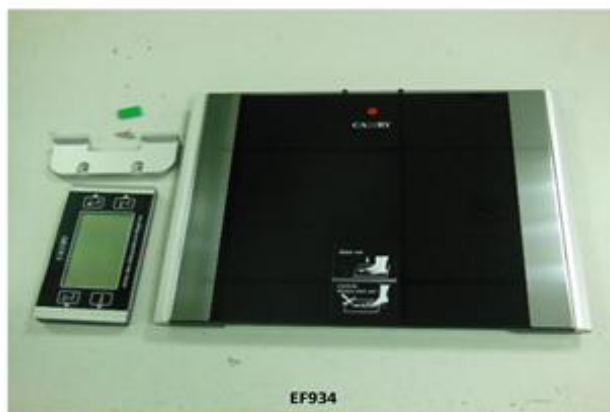


Photo for basic model

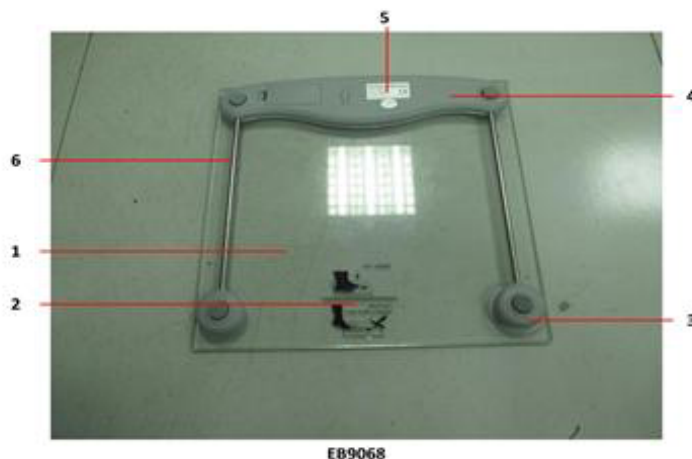
"The photo of "EF934" is taken from report CANEC1512212901"

CANEC1520859101



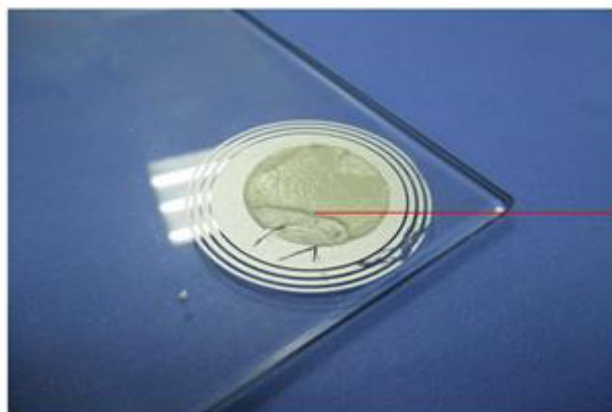
Photo for extended model

CANEC1520859101



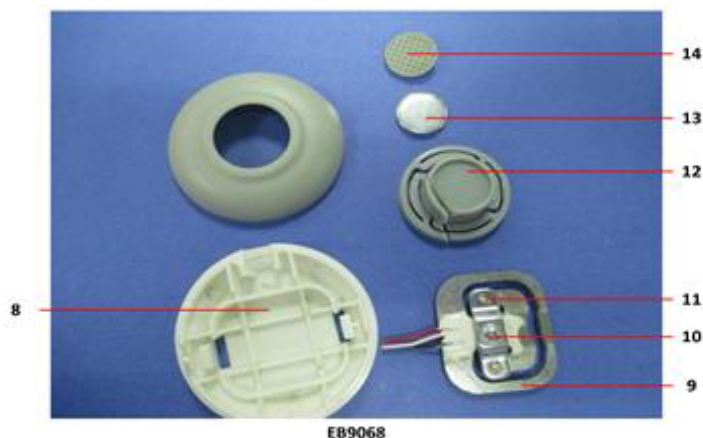
EB9068

CANEC1520859101

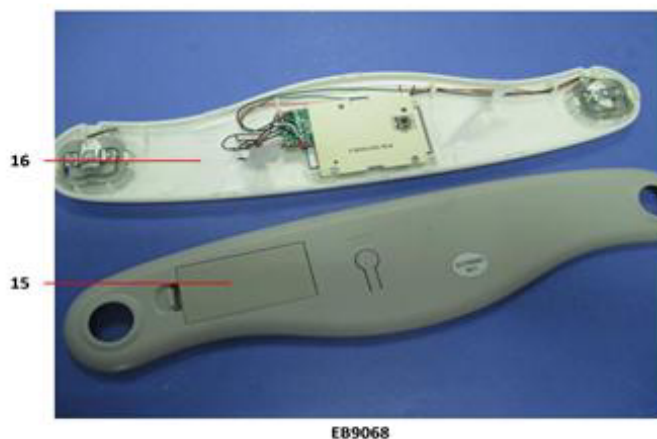


EB9068

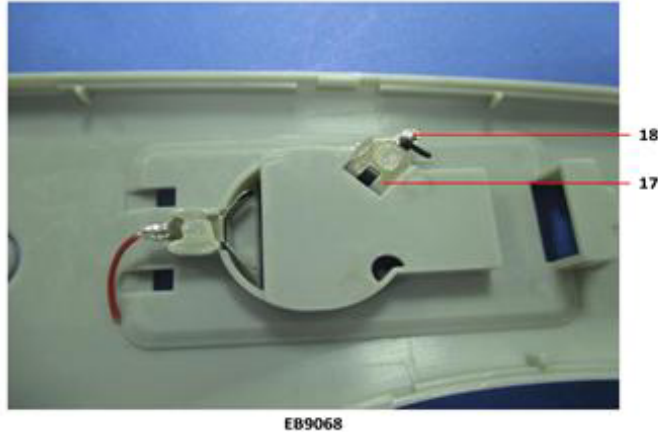
CANEC1520859101



CANEC1520859101



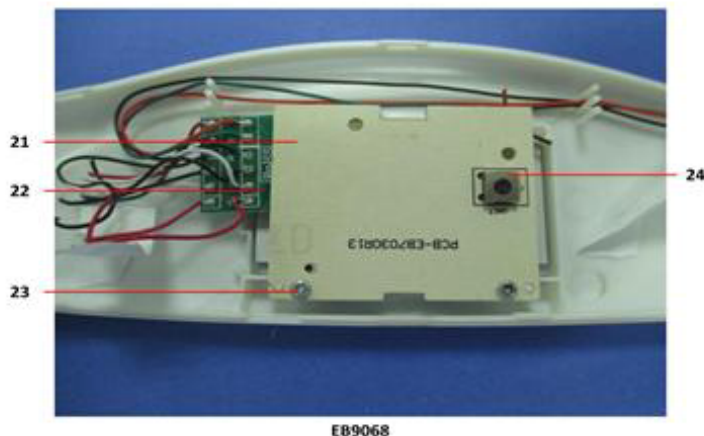
CANEC1520859101



CANEC1520859101

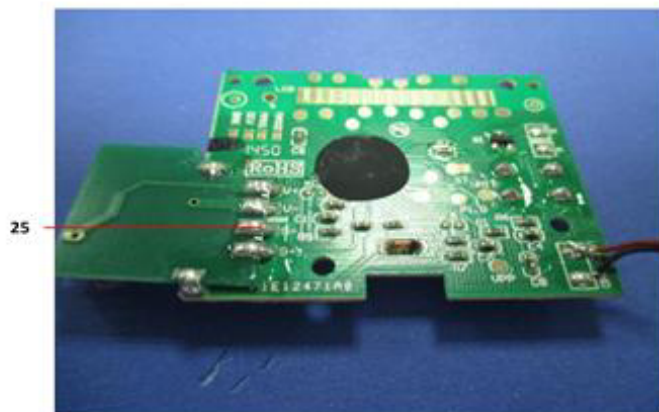


CANEC1520859101

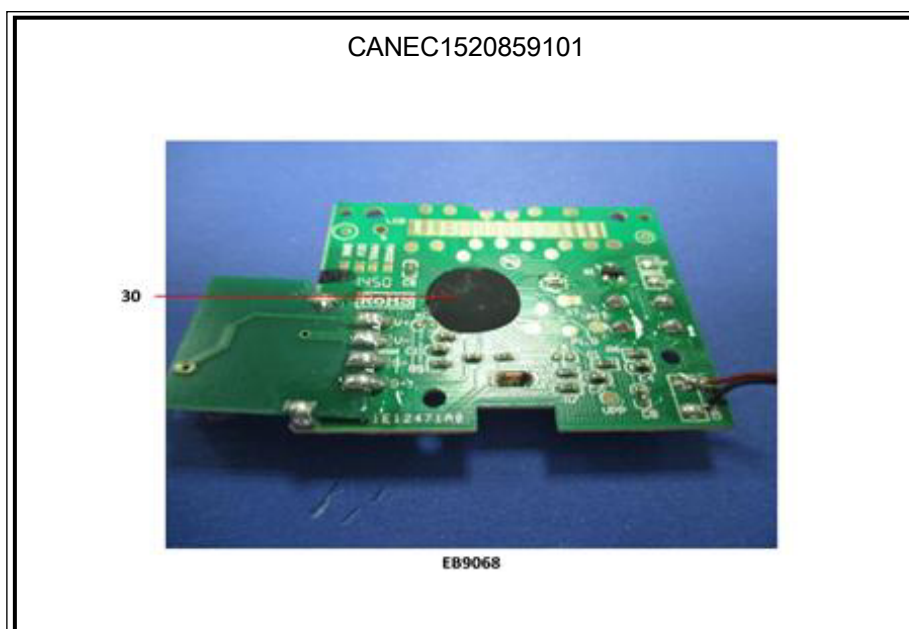
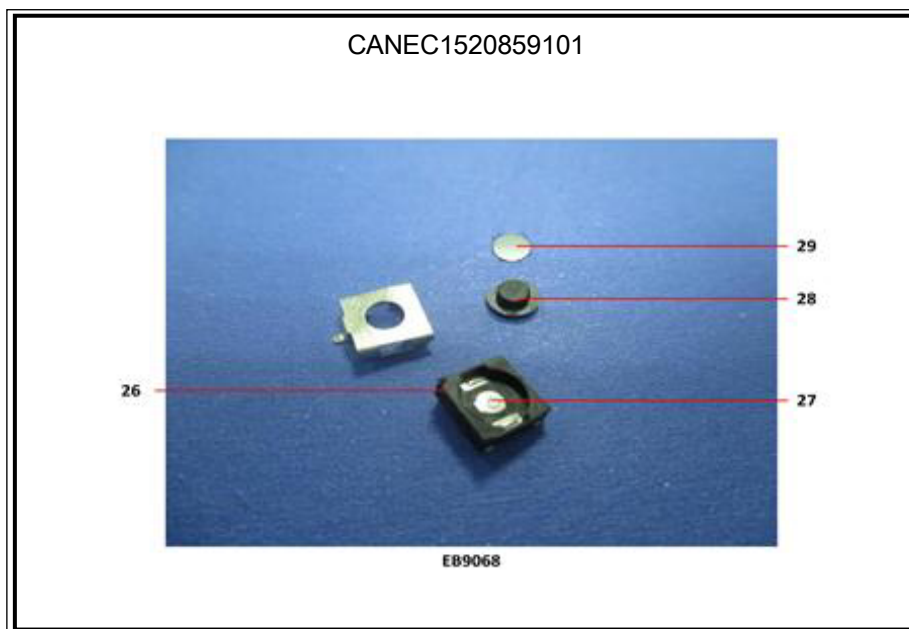


EB9068

CANEC1520859101



EB9068



SGS authenticate the photo on original report only

*** End of Report ***